



AVerMedia

AVerDiGi NV Series Hybrid Windows-based DVR

- Hybrid NVR
- D1 Resolution
- Video Encryption
- Video & Audio
- CMS
- Remote Control
- Mobile/PDA Viewer
- Live Update



Analog & Digital Support With Outstanding Features



Hybrid NVR

Support both IP and Analog cameras / PTZ control with various popular brands.



MegaPixel IP Camera

Support various IP cameras up to MegaPixel to provide the most dedicated image quality.



POS Integration

Provide POS Viewer and filter condition to monitor POS information with image and receipt as user's demand.



Dual Monitor

Support dual-monitor environment for independent preview and playback or EMAP to save your trouble switching.



iEnhance

Exclusive video enhancement software can adjust recorded data to the highest quality image.



iStable

iStable is the video stabilizer software which can fix shaking and jolts impact on video with just one click.



Video Encryption

Support H.264 and MPEG4 video encryption for privacy protection and security purpose.



SDK

Software Development Kit opened for integrating NV system via your intelligent software to provide customized function.

Remote Access



(Support up to 4 monitors display)

CM3000

Central Management System enables remote control up to 1000 DVRs with live alarm notification simultaneously and applies to AVerDIGI NV / SA / EB series products as a total solution.



(Support up to 4 monitors display)

RC1000

Advanced remote console enables live preview and record as a backup server, fully remote control of all channels via internet to integrate 16 DVRs for a solid surveillance system and instant notification.



Web Viewer

Facilitate users for remote viewing via Web browser without installing or downloading extra software.



PDA Viewer

Provide video and audio monitoring on 4 channels or full screen view anytime and anywhere.



Handy Viewer

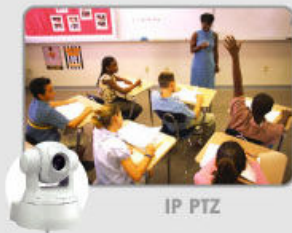
Support remote cell phone access for instant monitoring and notification.



Smart Phone

Support Windows and Symbian smart phone operation system. Moreover, smart phones with JAVA2.0 can support PTZ cameras control.

Application



IP PTZ



PTZ



Analog Camera



IP Camera
(up to MegaPixel)

Camera Integration

Suitable for different environment to use



System Integration

Easy for retailers and enterprise to use and control.



AVerDIGI POS box POS ATM



Backup Device

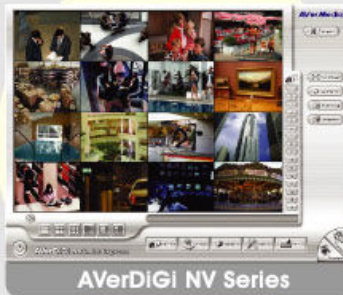
Various backup devices supported for every projects demand.



CD / DVD-RW External HDD Disk Array



Pen Drive NAS RAID



AVerDIGI NV Series



Intranet Internet



Security System

Multiple launch programs to protect your assets.



Printer Light Telephone



Alarm LCD TV



Access Control Home Appliance SMS / MMS



E-Mail Microphone Sensor

Remote Monitoring



Central Management

Security guard can monitor and remote control DVR via CM3000 and RC1000 for instant notification



CM3000



RC1000



2 Way Audio

For instant mutual communication regardless of distance



Remote Access

Enable users to monitor any time and everywhere via



Web Viewer



PDA Viewer



Handy Viewer / Symbian smart phone / Windows smart phone



Remote Console



Software Development Kit

Users can integrate our system through 3rd party's intelligent software to customize their function, such as

- Customized UI
- ATM system
- Facial Recognition
- License Plate Recognition
-and more to meet your need.

Product Specifications



Product Model	NV3000				NV5000		8ch NV6240 E				16ch NV6480 E		NV7000H			
Operating System	Windows 2000, windows XP															
Video Card (stackable structure)	1	2	3	4	1 Main card + 3 optional Video extension cards		2 main cards + 2 optional Video extension cards		1	2*	1	2*	1	2*	1	2
Video Input	4	8	12	16	4,8,12,16	8,16	8	16	16	32	16	32	8	16		
Video Format	H.264 / MPEG4 / MJPEG				H.264 / MPEG4 / MJPEG		H.264 / MPEG4				H.264					
Compression Mode	Software Compression				Software Compression		Software Compression				Hardware Compression					
Video Resolution (full de-interface filter)	NTSC: 352x240, 640x480, 720x480 PAL: 352x240, 640x480, 720x576				NTSC: 352x240, 640x480, 720x480 PAL: 352x240, 640x480, 720x576		NTSC: 352x240, 640x480, 720x480 PAL: 352x240, 640x480, 720x576				NTSC: 352x240, 720x480 PAL: 352x240, 720x576					
Audio Input	1	2	3	4	4	4	8	16	16	32	16	32	8	16		
TV Output	YES				YES		Multiple and configurable channels				YES					
Display Rate (NTSC/PAL) fps	30/25	60/50	90/75	120/100	120/100	240/200	240/200	480/400	480/400	480/400	480/400	960/800	240/200	480/400		
Recording Rate (NTSC / PAL) fps	30/25	60/50	90/75	120/100	120/100	240/200	240/200	480/400	240/200	480/400	480/400	960/800	240/200	480/400		
Sensor Input / Relay	4/3	8/6	12/9	16/12	4/3	4/3	4/4	8/8	4/4	8/8	4/4	8/8	4/4	8/8		
IP Camera Access	1	1	1	1	4,8,12,16	8,16	8	16	16	32	16	32	8	16		
Overheat Detection											Yes	Yes				
Product Level	Entry Level				Medium Level		High-End Level				High-End Level					
Distinction	Cost-effectiveness with superior video quality. Video is stackable and expandable to provide high flexibility and meet your need.						TRUE PCI-E interface enables real-time recording 480 fps at 640 x 480 and 2 times faster data transfer speed than PCI interface.						H.264 hardware Compression provides smallest file size and save your disc memory with guaranteed recording frame rate. Also, minimize your CPU loading but still offer real time frame rate.			

* Coming soon

Product Feature

Video Source	Various Input	4~16 composite video inputs (BNC connectors), support PTZ cameras and IP cameras
Display	Display Mode	Auto Scan with full screen display under 1,4,8,9,13,16-camera display modes
Recording	Recording Mode	Continuous Recording / Smart Recording / Motion Recording / Audio Recording / Alarm Recording/ Manual Recording. All modes can be triggered by schedule
	De-interface Option	Optimize for dynamic or static camera scenes
	Motion Detection	Detecting any kind of movements within the camera focus
	Privacy Protection	Editable shield preventing private areas from monitoring and recording
	E-map Function	Show the positions of cameras, sensors, relays and triggered status
Search & Playback	Powerful Search	By date, time, camera, area, event, vision, and log file.
	Bookmark	Easily save links to particular locations of recorded data and play them directly from the saved links
	Advanced Event Log Viewer	Details complete event logs according to your selection on event, operation, POS, system and network events.
Alarm Notification	Alarm Triggered Mode	Single event or multiple events as alarm trigger conditions / set keyword from POS / HDD error
	Smart Alert Function	Launch E-map / 1-cam TV display / Warning sound / Email / Make a phone call / Send files to FTP / SMS and MMS / PTZ preset point tracking / Alarm SOP wizard / Start recording / Enlarge camera view / Send video to CMS
Others	Direct Burn	Support direct burn to CD-R / RW / DVD-R / RW discs
	Please (patent-pending)	Enable dialogs to trace if operator pays attention to security monitor.

Specifications are subject to change without prior notice



All right reserved. No part of this document may be reproduced, stored in a retrieval system, or transmitted in any form or by any means (Electronic, mechanical, photocopy, recording, or otherwise) without the written permission of AVerMedia. Information in this document is subject to change without notice. The information contained herein is to be considered for informational purposes only and shall not be considered legally binding. 2007 by AVERMEDIA TECHNOLOGIES, Inc. All rights reserved. No part of this publication may be reproduced, transmitted, transcribed, stored in a retrieval system, or translated into any language in any form by any means without the written permission of AVERMEDIA TECHNOLOGIES, Inc. AVerMedia is registered trademarks of AVerMedia Technologies, Inc. All other trademarks belong to their respective companies.
Made in Taiwan.20070105

AVerMedia[®]
www.avermedia.com
www.averdigi.com

AVerMedia

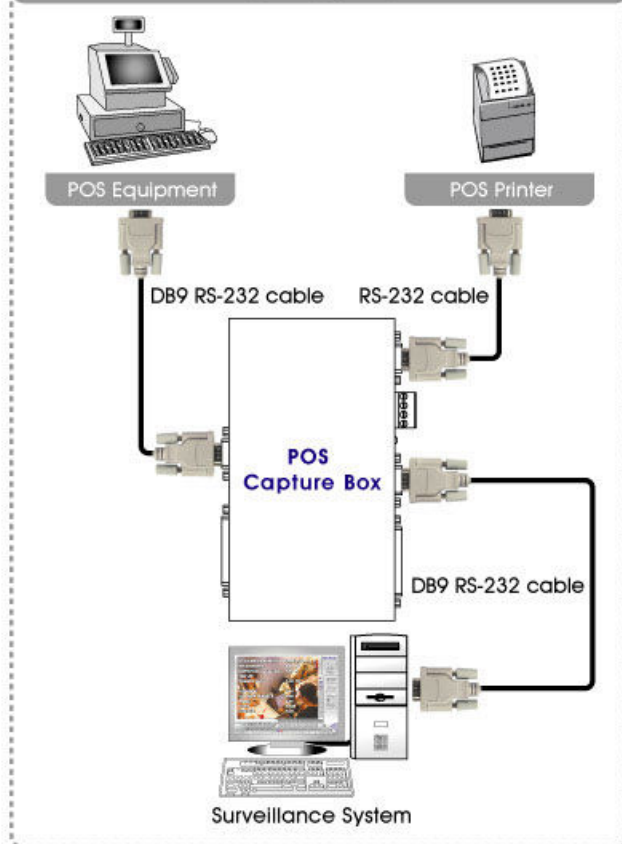
AVerDiGi POS Capture Box

AVerDiGi POS Capture Box enables you to easily integrate your POS equipment with the AVerDiGi NV and SA DVRs or other surveillance system that supports POS feature. The AVerDiGi POS Capture Box presents visual text awareness, transaction data transmission to POS printer and surveillance system to help you track the transaction image and text of sold merchandize with the POS to reduce business losses and employee theft.

Features Highlight

- Plug and play without any difficulty
- Connect up to 16 POS or cash register
- Capture POS transaction image and text to DVR
- Overlay POS transaction data to screens for monitoring.
- Text filter function to avoid redundant information
- Alarm notification: Email / Phone Call / SMS / MMS / PTZ tracking / TV-out
- Powerful search by date, time, keyword, area, event, vision, and log file
- Remote monitoring via CM3000, RC1000, Web Viewer, PDA Viewer
- Advanced setting to adjust POS text font, position, and color
- Compatible with commonly used POS system
- Support both parallel and serial ports
- Support Dynamic IP address

Connection

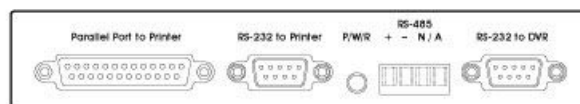


Specification

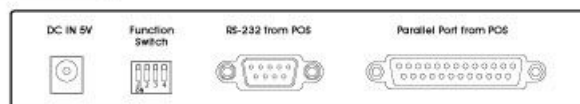
Input	RS-232 port from POS
	Parallel port from POS
Output	RS-232 port to printer
	Parallel port to printer
	RS-232 port to DVR
	RS-485
Baud-rate setting	9,600 bps~115,200 bps
DC IN	DC 5V, 2A
Dimensions	172(W) x 30(H) x 108(D) mm

Connector Port

Front View:



Rear View:



AVerMedia

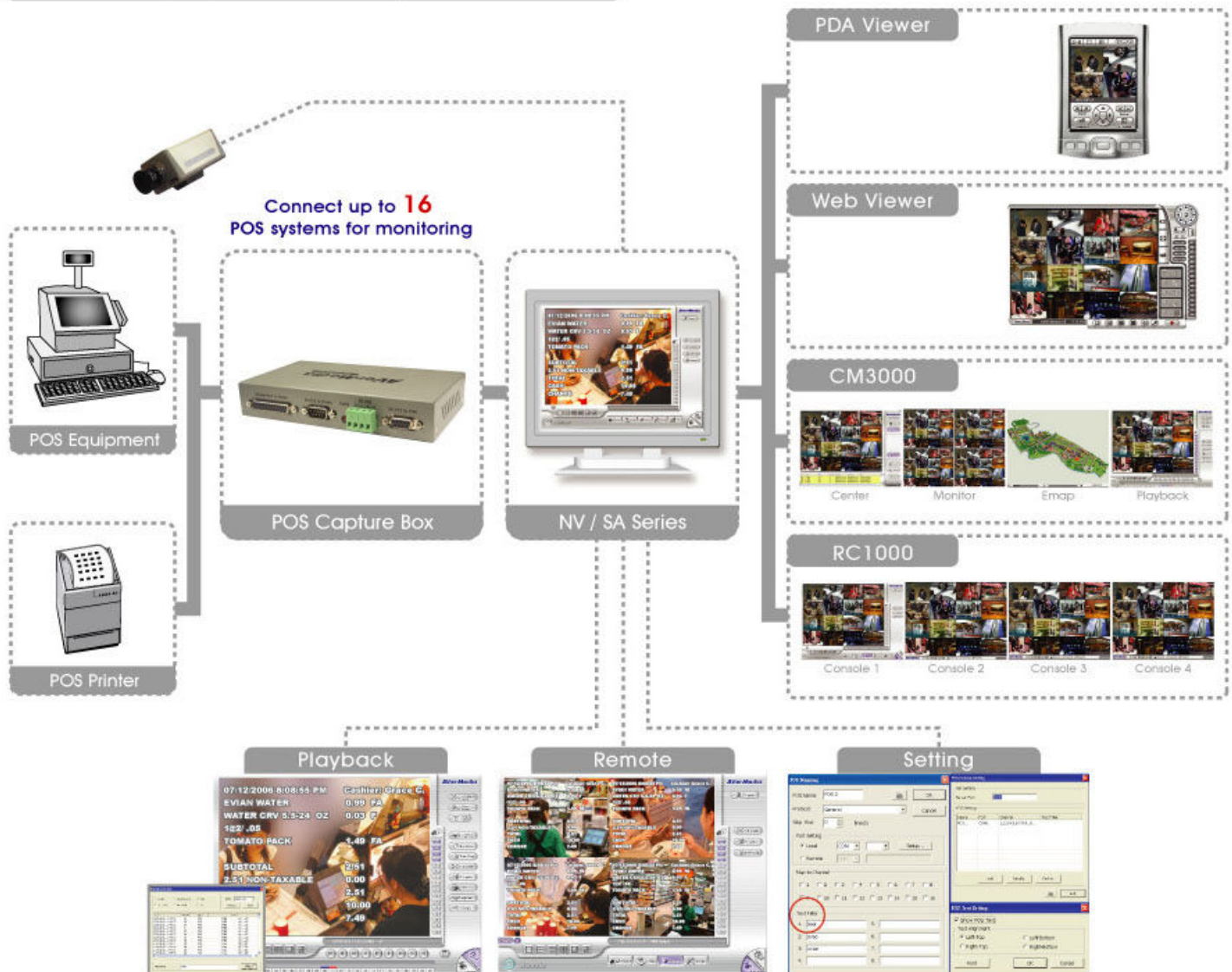
AVerDiGi POS Capture Box

Application

AVerDiGi POS Capture Box is suitable for every place with a POS!

- Department stores
- Supermarkets
- Coffee shops
- Pharmacy
- Convenience stores
- Electric stores
- Book stores
- Clothes stores
- Gas stations
- Restaurants
- Retail stores
- Franchise

Application Diagram



All right reserved. No part of this document may be reproduced, stored in a retrieval system, or transmitted in any form or by any means (Electronic, mechanical, photocopy, recording, or otherwise) without the written permission of AVerMedia. Information in this document is subject to change without notice. The information contained herein, is to be considered for informational purposes only and shall not be considered legally binding. 2006 by AVERMEDIA TECHNOLOGIES, Inc. All rights reserved. No part of this publication may be reproduced, transmitted, transcribed, stored in a retrieval system, or translated into any language in any form by any means without the written permission of AVERMEDIA TECHNOLOGIES, Inc. AVerMedia is registered trademarks of AVerMedia Technologies, Inc. All other trademarks belong to their respective companies.
Made in Taiwan.20061212

AVerMedia[®]
www.avermedia.com
www.averdigi.com