

Technical Specification						
Models	GV-250	GV-600	GV-650	GV-800	GV-900	GV-1000
Video Inputs	2~16	4~16	4~16	4~16	8,16	16
Audio Inputs	1 channel	1 channel	2 channels	4 channels	4 channels	Require GV-A16
Recording Speed	20 fps NTSC 15 fps PAL	30 fps NTSC 25 fps PAL	60 fps NTSC 50 fps PAL	120 fps NTSC 100 fps PAL	240 fps NTSC 200 fps PAL	480 fps NTSC 400 fps PAL
Video Compression Type	Wavelet, MPEG-4, GeoMPEG-4					
Compression Rate	Variable, 300:1 maximum					
Video Resolution	320x240, 640x240, 640x480, 640x480SW					
Supported Signal Type	NTSC, PAL					
Supported Network	TCP/IP, LAN, WAN, Internet, Modem Dial-up, Modem-to-Modem, ISDN					
Supported Backup Device	HDD, Network HDD, CD/RW, DVD/R, ZIP, JAZ.					
Supported PTZ control protocols	Ademco Jupiter, Canon VC-C3/VC-C4, DiGiDome DOH-240, DynaColor D-7720/7722, Kalatel CyberDome, Lilin PIH, Panasonic WV-CS850/854, Pelco Spectra D-protocol/P-protocol, Samsung SCC-641/643, Samsung SPD-1600, Sensormatic Ultra IV, Sony DVI-D100					
Operating System	Windows 2000, XP, Server 2003					
Available Languages	English, German, French, Spanish, Portuguese, Japanese Simplified Chinese, Traditional Chinese, Russian, Polish					



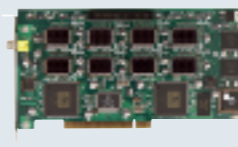
#### GV-NET

Specification	
Communication	RS-232, 2400~9600 RS-485, 2400~9600
DC In	Power Adaptor DC 5V,
Dimension	104 (W) x 70 (H) x 32 (D)



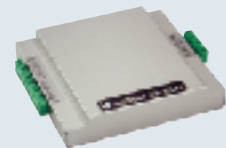
#### GV-NET/IO Card GV-NET Card (without IO function)

Specification	
Input	4
Relay Output	4, off time 4ms
Communication	RS-232, 2400~9600 RS-485, 2400~9600
DC-IN	DC 5V, 1A



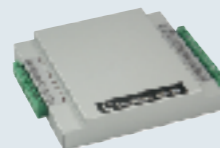
#### GV-DSP Real-time Display Card

Specification	
Display Rate	240fps, 480fps
Input	8, 16 channels
Output	TV-Out x 1



#### GV-RELAY

Specification	
Relay Output	8
Relay Status	Normal Open
Power Consumption	5VDC, 350mA (MAX)
Relay On Time	8 ms
Relay Off Time	5 ms
Dimension	179 (W) x 35 (H) x 166 (D)



#### GV-IO

Specification	
Communication	RS-485, 2400~9600
Output	Output: 16
Input	Input: 8 Input Signal: 0-5V DC High State: 5V Low State: 0V
Dimension	179 (W) x 35 (H) x 166 (D)



#### GV-DATA CAPTURE

Specification			
Input	RS-232 from POS	DB9 female	
	Parallel port from POS	DB25 male	
Output	RS-232 to printer	DB9 male	
	Parallel port to printer	DB25 female	
	Parallel port to DVR	DB9 male	
	RS485+		
	RS485-		
Dimension:	163(W) x 118(H) x 30 (D)		

★ All specifications may change without prior notification.



## GV-Series Surveillance System

- All-in-one surveillance solution
- Live monitoring via Internet browser
- Mobile surveillance by PDA and i-Mode
- Versatile MPEG4 / Wavelet compression
- Easy integration of external alarms and sensors

# GV-Series Surveillance System

## V6.1 KEY FEATURES

- E-map lays out the locations of video cameras, sensors and alarms within the facility floor plan
- Real-time object tracking by PTZ domes
- Object Image retrieving using the Object Index
- Disabled Ctrl-Alt-Del to avoid unauthorized ending of the DVR system
- IR remote control for basic system operation

## KEY FEATURES

- Live and playback with POS transaction data overlays view screen (additional hardware is to be supplied separately)
- Object counting feature counts number of objects passing thru a pre-defined area
- View screen pop-up on motion or alarm activation
- "Keep Days" feature allows video files to be held for a selected number of days
- Pre and post-motion recording
- Password protection allows only authorized users to enter user definable features
- Digital watermark on .avi files for video authentication

## MONITOR VIEWING

- Dual view allows live and playback (ViewLog) screens to be viewed in separate monitors
- Full screen view

## AUDIO

- Listen to live audio, up to 16 channels (additional hardware is to be supplied separately)
- Record up to 16 channels of audio in real time

## RECORDING

- Choice of 25, 30, 60, 120, 240, 480 fps recording
- Round-the-clock, motion detection, alarm activation, and schedule recording mode
- Adjustable recording frame rate and recording quality on a camera by camera basis

## VIDEO QUALITY ENHANCEMENT

- Video de-interlace filter to eliminate ghost effect
- Video AGC (auto gain control) to optimize video signals
- DirectDraw overlay

## SEARCH & PLAYBACK

- Object search allows user to search objects or movement in a particular area of the image
- Index search searches video files based on criteria group: motion, alarm and POS transaction events
- Thumbnail browsing searches specific frame within a video footage
- Synchronized audio and video
- POS transaction data overlays on playback videos
- Counting objects in a particular area of the image

## NOTIFICATION

- E-mail notification with video images (in attachment) on motion and alarm activation
- E-mail or telephone notification on camera fail or I/O error
- Direct PTZ dome to preset location on motion and alarm activation

## WEBCAM

- 1, 2, 4, 8, and 16 screen divisions
- Full screen view
- User definable Bandwidth Control ensuring image transmission only uses allocated bandwidth
- Full control of PTZ domes and I/O devices from a remote location
- Dynamic IP supported
- Locate video server by domain name
- Quick link to GV-Systems through bookmark
- Two-way audio communication with GV-System (listen and talk back)

## REMOTE PLAYBACK

- Remotely access to recorded video and audio file
- Play up to 32 channels simultaneously
- Address book function, allows user to create direct links to frequently use GV-System
- Locate files by specific date, time, or camera
- Advanced search function by time frame and range of selected camera
- Data transmission bandwidth control

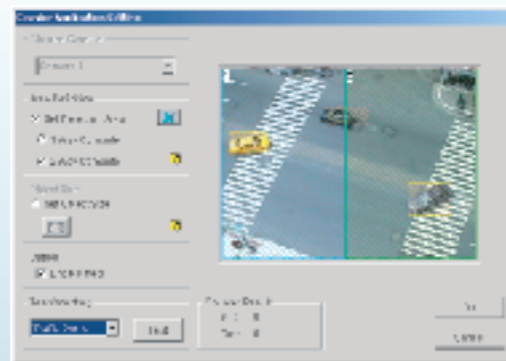
## CENTER V2

Create a Central Monitoring Station with Center V2! Effectively reduce false alarms! With video (live or attachment mode) transmitted instantly from surveillance site to Center V2, you can verify nature of the alarm, and get those video footages to the proper authorities for optimum action - in a matter of minutes.

- Instant video attachment to Center V2 on motion, alarm, and panic button activation
- 15, 24, 25, and 36 screen (in 2 pages) divisions
- Two-way audio communication (listen and talk back)
- Dual view supported; allows live video and event list to be viewed in separate monitors
- Keeps track of server activities, including motion event, alarm event, subscriber login/logout, and connection status



• ViewLog



• Object Counter



• Emap



• WebCam Multiview



• Center V2