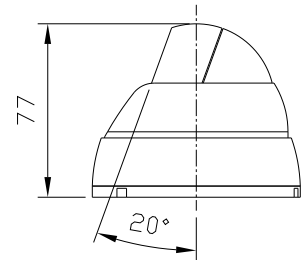
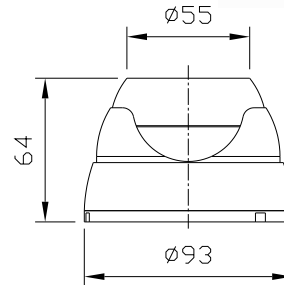
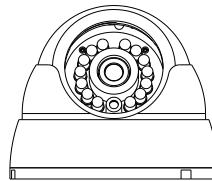
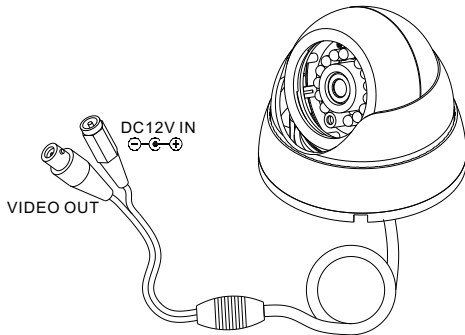


IR-916D

FEATURES

- IR RANGE :10M
- 14 PCS LEDS
- SONY 1 / 3" CCD
- HORIZONTAL RESOLUTION
Max. 420 TV Lines



Dimension : mm

VIDEO SYSTEM	NTSC	PAL
PICK UP ELEMENT	1/3 INCH CCD IMAGE SENSOR (INTER LINE)	
IMAGE SIGNAL PROCESS	DIGITAL SIGNAL PROCESSING SYSTEM	
LENS MOUNT	4.0 mm	
NUMBER OF EFFECTIVE PIXELS	510 (H) x 492 (V)	500 (H) x 582 (V)
PICTURE ELEMENTS	Approximately 250k	Approximately 290k
HORIZONTAL RESOLUTION	Max. 420 TV Lines	
POWER SUPPLY	DC +12v	
POWER CONSUMPTION	120 mA IR OFF ; 180 mA IR ON	
SYNCHRONIZATION	INTERNAL	
SCANNING SYSTEM	2 : 1 INTERLACE	
SENSITIVITY	0 LUX -IR ON	
S/N RATIO	Max 48 dB	
AUTO GAIN CONTROL	YES	
BACK LIGHT COMPENSATION	YES	
WHITE BALANCE	AUTO	
ELECTRONIC SHUTTER	AUTO: 1/60S TO 1/10,000S	AUTO: 1/50S TO 1/10,000S
OUTPUT	1 Vp-p COMPOSITE VIDEO OUTPUT, 75 OHMS	
IR RANGE	10 M	
IR WAVELENGTH	850 nm	
OPERATING TEMPERATURE	-5 °C ~ +60 °C	
DIMENSIONS (D x H)	55x77mm	
WEIGHT	About 185g	