

# CamHi 4G Cam CMS Software

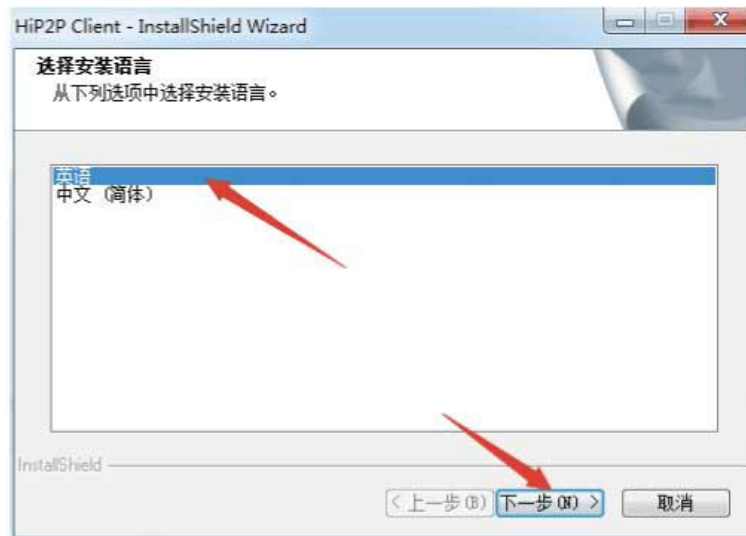
## 1. App and CMS download

Download from this link: <http://www.camhi.top>

**Note:** During the software download process, the anti-virus software may falsely report. You can add the download link to the anti-virus software whitelist or lower the security level.

## 2. Installation

When installing the software, please select the language (Chinese/English) according to your needs




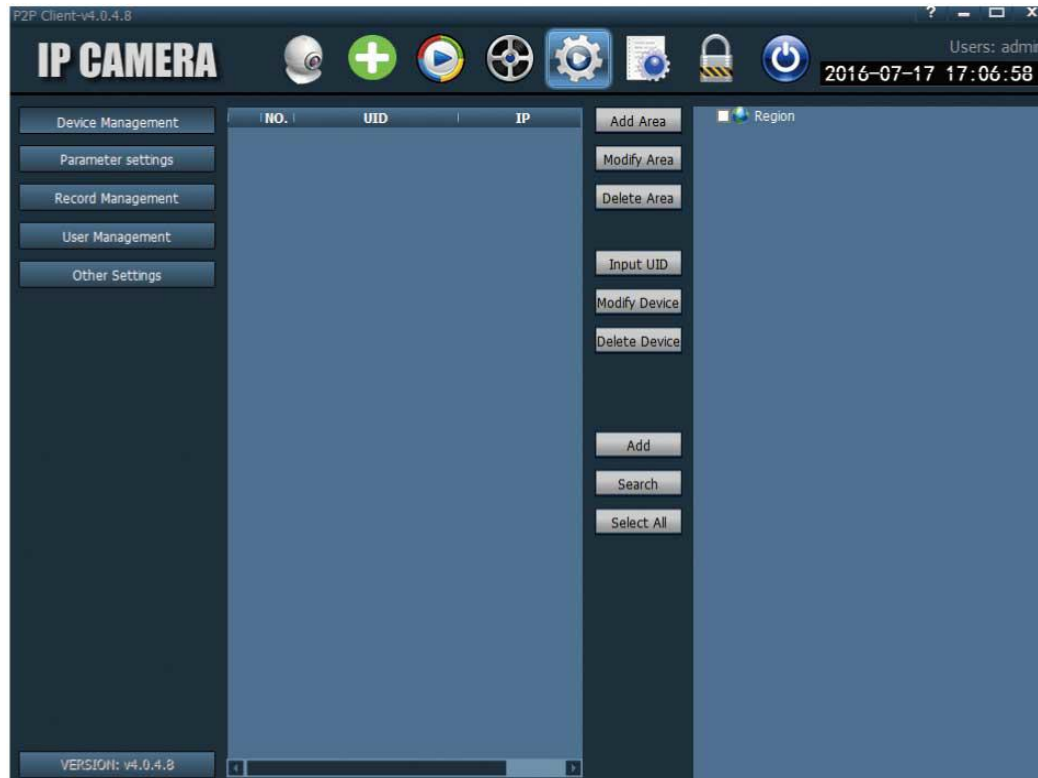
## 3. CMS software interface introduction



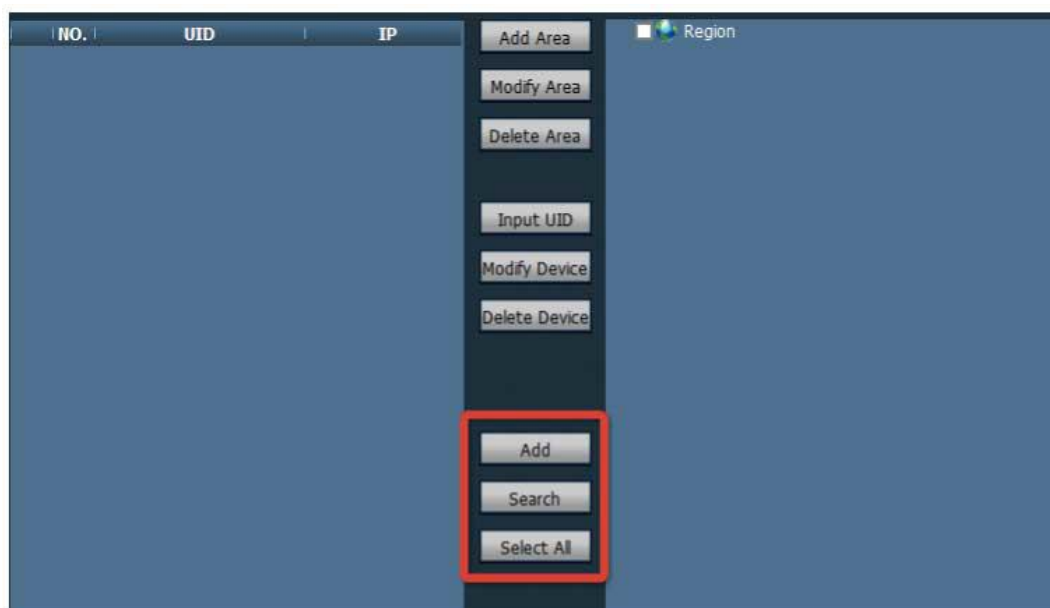
1. PTZ control (please confirm whether the device supports PTZ function)
2. Intercom
3. Volume adjustment
4. Save video to computer hard drive
5. Snap a picture
6. Single screen/multi-screen display
7. Local playback
8. Remote playback
9. Lock screen
10. Exit the software

## 4. Add camera

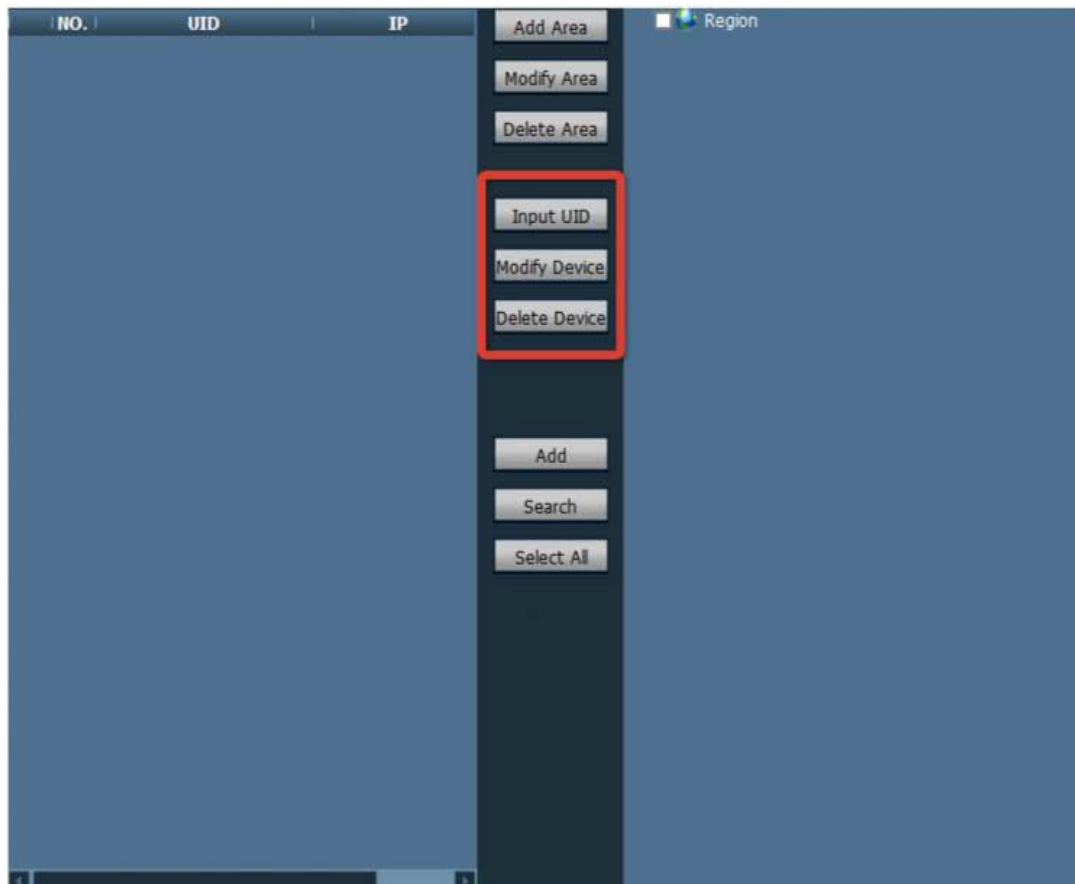
1) Click  to enter the setting interface.



2) Click "Search" for cameras in the LAN, and then add cameras



2) Click "Manually add", enter the camera's UID number, user name and password



The 'Add Device' dialog box contains the following fields and controls:

- UID:
- Name:
- User Name:
- Password:
- Area:  (dropdown menu)
- OK button
- Cancel button